

Q-283R4



SVE BULLETIN

SPECIAL VEHICLE ENGINEERING – BODY BUILDERS ADVISORY SERVICE

E-Mail via Website: www.fleet.ford.com/truckbbas (click "Contact Us")

Toll-free: (877) 840-4338

QVM Bulletin: Q-283R4

Date: 20, February, 2018

Revised 28/April/2020

2018 and 2019 Super Duty Rear View Camera – Chassis Cab or Box Delete

Revision	Update	Revision Date
Q-283R2	<ul style="list-style-type: none">• Clarified camera kit option table• Added Service kit and IDS tool information	06 Dec, 2018
Q-283R4	<ul style="list-style-type: none">• Updated Model year	28April,2020

Models Affected: All 2018MY Super Duty Chassis Cab and Box Delete vehicles

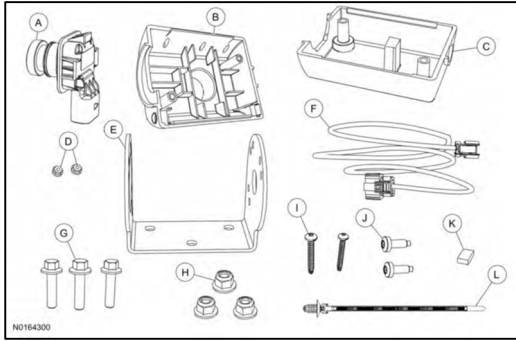
Issue: Effective May 1, 2018, all vehicles completed in 2 or more stages (produced by Ford as incomplete vehicles) are required to comply with new FMVSS 111 requirements for rear visibility (including rearview camera). The new FMVSS 111 requirements affect vehicles 10,000 lbs GVWR or less. This bulletin is intended to assist upfitters who are completing Super Duty Chassis Cabs or Box Delete vehicles comply with FMVSS 111 rear view camera requirements using the Ford reverse camera kit.

Rear View Camera kit: A rear view camera and prep kit for incomplete vehicles is available as an orderable option (order code 872 - see figures 1 and 2) with all Pick-up Box Delete (option 66D) and Chassis Cab incomplete vehicles. The optional Prep kit is available with the following displays:

Vehicle	Trim Level	Display			
		Rearview Mirror	4.2 inch		8 inch
		Base	Order Code 585	Order Code 91M	Order Code 913
Chassis Cab	XL	S	F	O	N/A
	XLT	N/A	N/A	S	O
	Lariat	N/A	N/A	N/A	S
Box Delete (Order Code 66D)	XL	S	F	O	O
	XLT	N/A	N/A	S	O

S-Standard, O-Optional, F-Fleet Only Option

A service kit is also available through Ford Service (part number **JK3Z-19G490-B**). Note that this service kit is compatible only with vehicles ordered with the 4.2 or 8 inch MFD displays. Vehicles ordered with the base audio package will not come with the rearview mirror display. This display cannot be installed post production. A dealer diagnostic tool with update 109.01 or higher is required to make the parameter change needed to activate the service kit camera.



Item	Quantity	Description
A	1	Rear View Camera
B	1	Front Camera Case Half
C	1	Rear Camera Case Half
D	2	Screw Retaining nuts
E	1	Mounting Bracket
F	1	Wire Harness
G	3	Bolts
H	3	Nuts
I	2	Screws (Longer)
J	2	Screws (Shorter)
K	1	Foam Pad
L	1	Push Pin Tie Strap

Figure 1: Camera Kit Contents

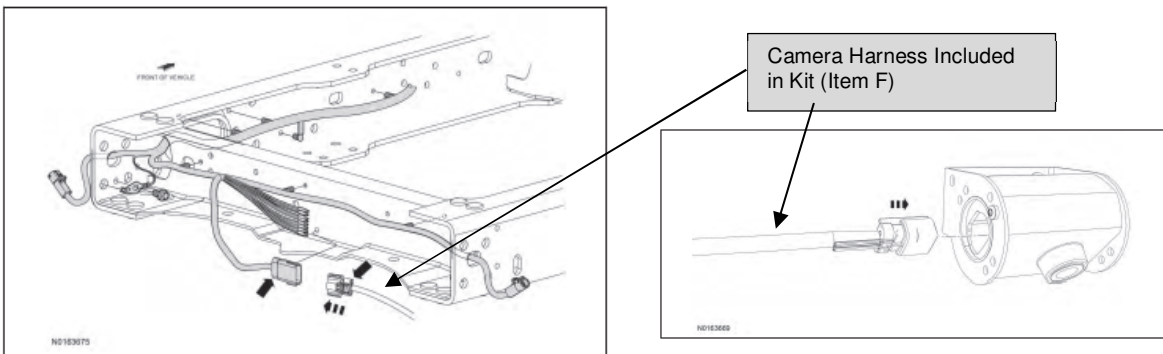


Figure 2: Camera harness Location for incomplete vehicles

Ford Camera Kit Compliance Capability:

Ford has tested the rear view camera kit in combination with the Rear View Mirror, 4.2 inch and 8 inch displays. The camera/display pairing is capable of meeting the backup camera portion of FMVSS 111 when mounted in the zones defined below.

Compliance to FMVSS 111 will be the responsibility of the upfitter who alters the vehicle. This information is provided for directional purposes only, based on testing done by Ford.

If equipped with a rearview mirror display the camera included in kit is capable of complying with FMVSS 111 requirements when mounted in the areas defined in Figure 3.

If equipped with a 4.2 inch display **OR** 8 inch display the camera included in kit is capable of complying with FMVSS 111 field of view requirements when mounted in the areas defined in Figure 4.

Figure 3: Coverage with Rearview Mirror display (Order Code 585)

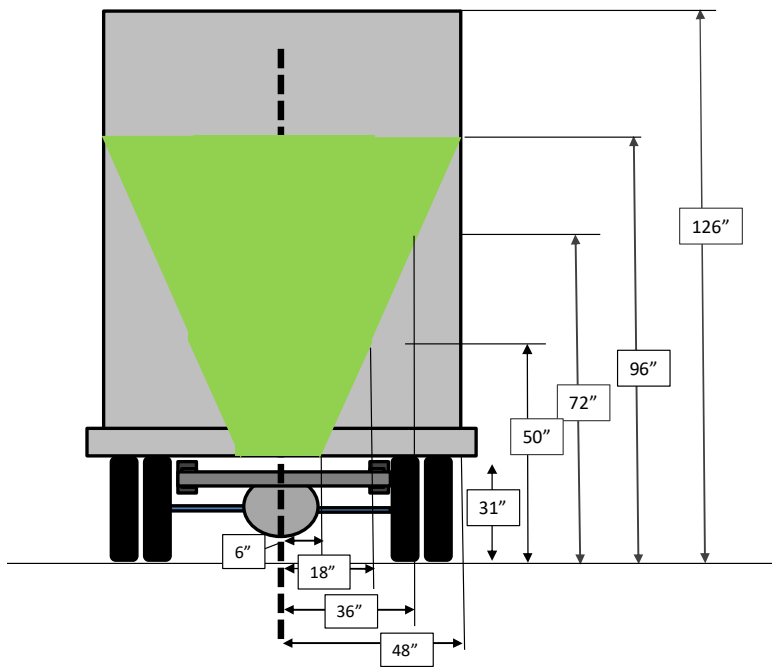
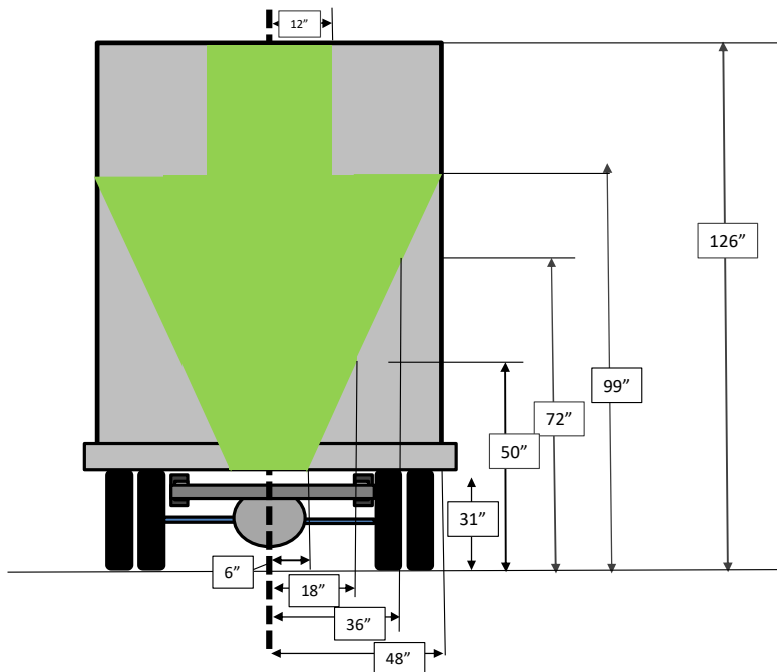


Figure 4: Coverage with 4.2 inch display (Order Code 91M) and 8 inch display (Order Code 91)



Final stage manufacturers who complete vehicles 10,000 lbs. GVWR or less produced by Ford as incomplete (e.g., pickup box delete, chassis-cabs, cutaways) on or after 5/1/2018 must meet these new FMVSS 111 requirements. Ford will issue additional bulletins containing information to assist final stage manufacturers achieve compliance with the Ford reverse camera kit on incompletes.

Note that the NTEA has provided detailed information and educational resources to help members better understand the new FMVSS 111/reverse camera conformity (including a manual and test kit). Ref.

<http://www.ntea.com/fmvss111rearvisibility>