

## SVE BULLETIN

### SPECIAL VEHICLE ENGINEERING – BODY BUILDERS ADVISORY SERVICE

E-Mail via website: [www.fleet.ford.com/truckbbas](http://www.fleet.ford.com/truckbbas) (click "Contact Us")

Toll-free: (877) 840-4338

QVM Bulletin: Q-193

Date: 18 August, 2010

Revision	Update	Revision Date
Q-193	<ul style="list-style-type: none"><li>Added model year cutoff</li></ul>	24 February, 2020

## 42-way Connector Heat Shield Installation Kit

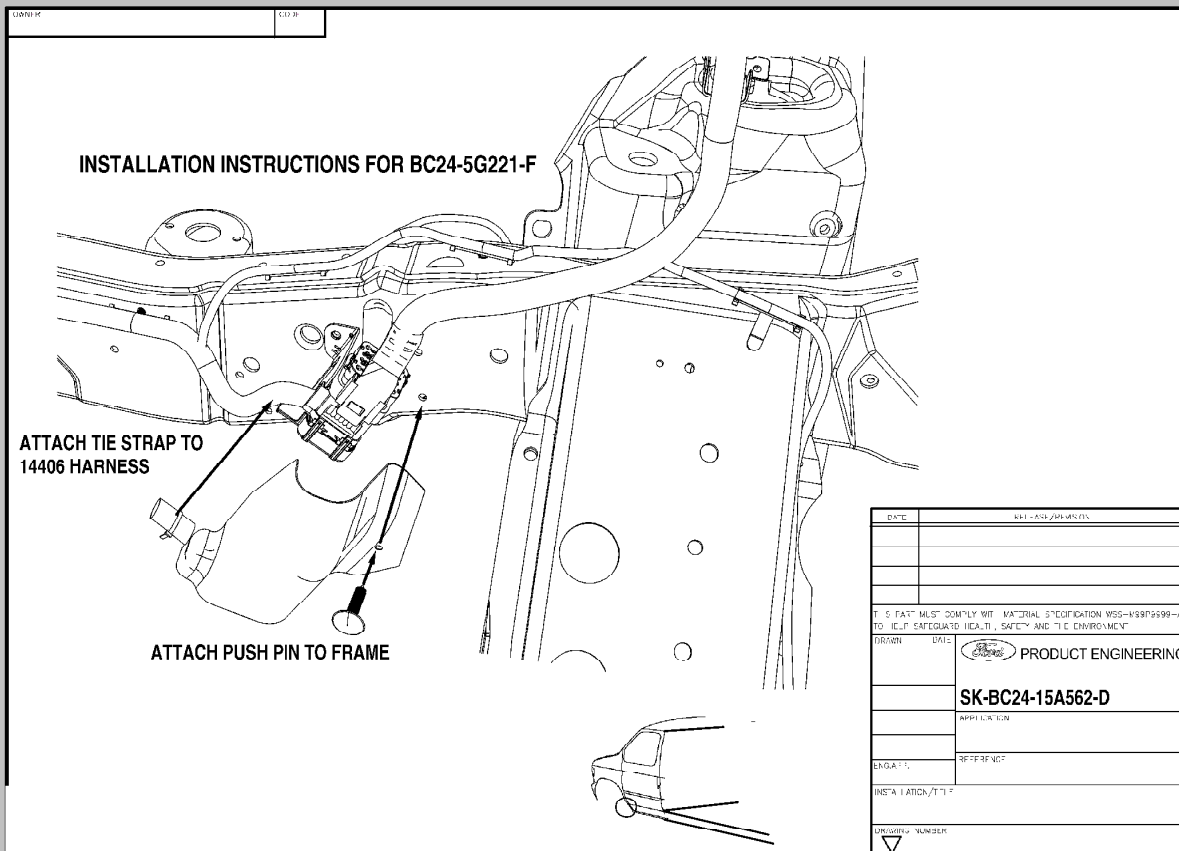
**Models Affected:** 2011 Model Year to 2019 Model year E450 with 6.8L gas engine (desiring GCWR upgrade from 20-22K), E350 Van, E350/E450 Cutaways with Ambulance Prep package with 5.4L gas engine only.

### Background

On 2011MY units, a heat shield for the 42-way connector is required to be installed by the Upfitter on all 5.4L gas ambulances and all E450 cutaways with 6.8L engine models desiring a GCWR upgrade to 22k. The heat shield and installation instructions can be found: in a zip lock bag located in dunnage (cutaways) or the top of the I/P on vans.

## INSTALLATION INSTRUCTIONS FOR BC24-5G221-F

- 1) TIE STRAP SHIELD TO 14406 (FRAME HARNESS). TRIM END OF TIE STRAP
- 2) WRAP SHIELD AROUND 12A581 & 14406 INLINES-42-WAY CONNECTORS
- 3) CLEAN FRAME AREA WHERE GLUE SIDE OF SHIELD IS TO ATTACH
- 4) PEEL OFF ADHESIVE BACKING
- 5) PUSH PIN RETAINER IN HOLE ON LOWER FRAME
- 6) ATTACH GLUE AREA OF THE SHIELD TO FRAME



If you have any questions, please contact the Ford Truck Body Builders Advisory Service as shown in the header of this bulletin.