



## SVE BULLETIN

### SPECIAL VEHICLE ENGINEERING – BODY BUILDERS ADVISORY SERVICE

E-Mail via Website: [www.FordBBAS.com](http://www.FordBBAS.com) (click "Contact Us")

QVM BULLETIN: Q-304

Toll-free: (877) 840-4338

DATE: 21 February, 2020

## 2020MY & BEYOND SUPER DUTY REAR VIEW CAMERA FOR CHASSIS CAB OR BOX DELETE

### MODELS AFFECTED:

2020MY & BEYOND SUPER DUTY REAR VIEW CAMERA FOR CHASSIS CAB OR BOX DELETE

### ISSUE / DESCRIPTION:

Effective May 1, 2018, all vehicles completed in 2 or more stages (produced by Ford as incomplete vehicles) are required to comply with FMVSS 111 requirements for rear visibility (including rearview camera). The FMVSS 111 requirements affect vehicles 10,000 lbs GVWR or less. This bulletin is intended to assist upfitters who are completing Super Duty Chassis Cabs or Box Delete vehicles comply with FMVSS 111 rear view camera requirements using the Ford reverse camera kit.

### REAR VIEW CAMERA KIT:

A rear view camera and prep kit for incomplete vehicles is available as an orderable option (order code 872 - see figures 1 and 2) with all Pick-up Box Delete (option 66D) and Chassis Cab incomplete vehicles. The optional Prep kit is available with the following displays:

Vehicle	Trim Level	Audio Option Code	
		Display	
		4.2 inch	8 inch
		Base	Order Code 913
Chassis Cab	XL	S	N/A
	XLT	N/A	S
	Lariat	N/A	S
Box Delete (66D)	XL	S	O
	XLT	N/A	S

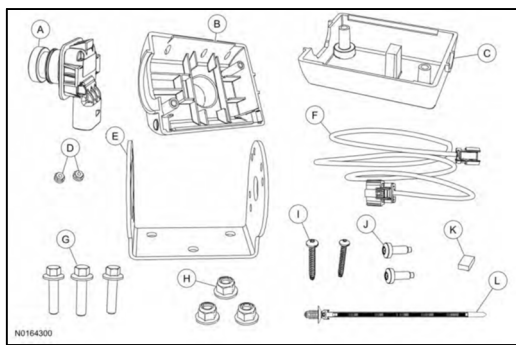
S-Standard, O-Optional

A service kit is also available through Ford Service (Part Number JC3Z-19G490-D). Note that this service kit is compatible with all chassis cab or box delete vehicles. Vehicles ordered with the base audio package will have a 4.2 inch display in the center stack. There is no longer a rearview mirror display available on Super Duty. For a chassis cab or box delete camera kit installed post production, a Ford Diagnosis and Repair System (FDRS) tool is required to make the parameter change needed to activate the service kit camera/display.

Instructions for enabling the camera/display are available at the following link:

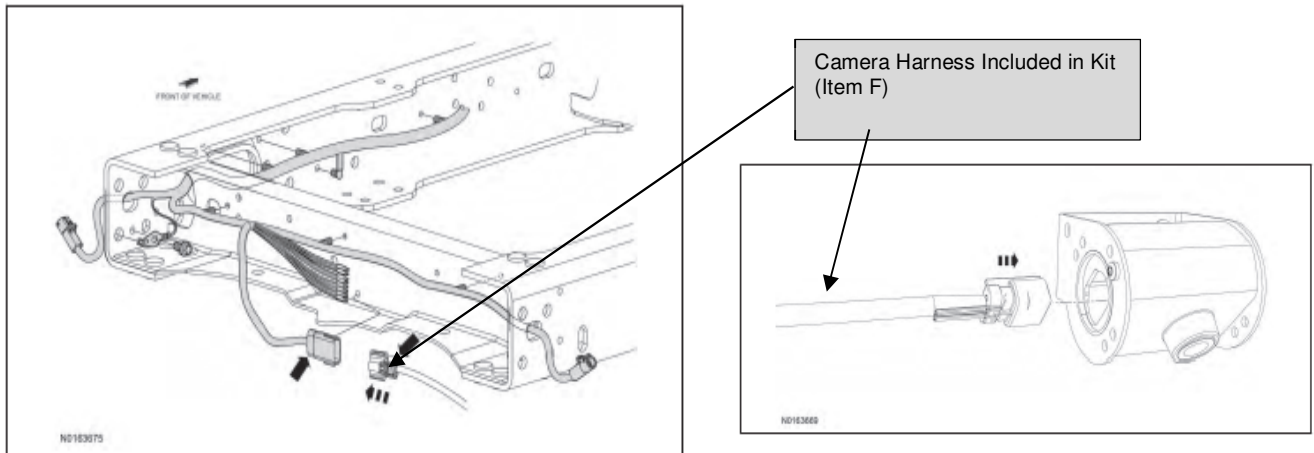
[http://www.fordservicecontent.com/ford\\_content/catalog/accessory\\_files/2020\\_P558\\_Rear\\_Camera\\_Kit\\_Enable\\_Disable.pdf](http://www.fordservicecontent.com/ford_content/catalog/accessory_files/2020_P558_Rear_Camera_Kit_Enable_Disable.pdf)

Item	Quantity	Description
A	1	Rear View Camera
B	1	Front Camera Case Half



C	1	Rear Camera Case Half
D	2	Screw Retaining nuts
E	1	Mounting Bracket
F	1	Wire Harness
G	3	Bolts
H	3	Nuts
I	2	Screws (Longer)
J	2	Screws (Shorter)
K	1	Foam Pad
L	1	Push Pin Tie Strap

**Figure 1: Camera Kit Contents**



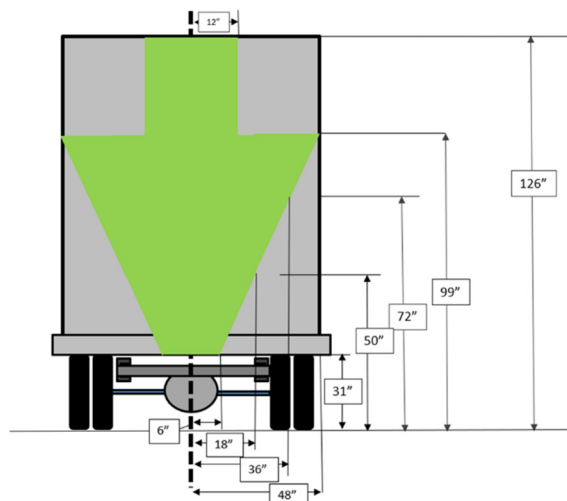
**Figure 2: Camera Harness Location For Incomplete Vehicles**

#### **Ford Camera Kit Compliance Capability:**

Ford has tested the rear view camera kit in combination with the 4.2 inch and 8 inch displays. The camera/display pairing is capable of meeting the backup camera portion of FMVSS 111 when mounted in the zones defined below.

***Compliance to FMVSS 111 will be the responsibility of the upfitter who alters the vehicle. This information is provided for directional purposes only, based on testing done by Ford.***

If equipped with a 4.2 inch display **OR** 8 inch display the camera included in kit is capable of complying with FMVSS 111 field of view requirements when mounted in the areas defined in Figure 3.



**Figure 3: Coverage with 4.2 inch display and 8 inch display**

Final stage manufacturers who complete vehicles 10,000 lbs. GVWR or less produced by Ford as incomplete (e.g., pickup box delete, chassis-cabs, cutaways) on or after 5/1/2018 must meet these FMVSS 111 requirements. Ford will issue

additional bulletins containing information to assist final stage manufacturers achieve compliance with the Ford reverse camera kit on incompletes.

Note that the NTEA has provided detailed information and educational resources to help members better understand the FMVSS 111/reverse camera conformity (including a manual and test kit). Ref. <http://www.ntea.com/fmvss111rearvisibility>

Refer to the Body Builder Layout Book for additional guidelines and recommendations. If you have any questions, please contact the [Ford Body Builders Advisory Service](#) as shown in the header of this bulletin.