

Q-291R2



SVE BULLETIN

SPECIAL VEHICLE ENGINEERING – BODY BUILDERS ADVISORY SERVICE

E-Mail via Website: www.fleet.ford.com/truckbbas (click "Contact Us")

Toll-free: (877) 840-4338

QVM Bulletin: Q-291R2

Date: 02 FEB 2020

Revision	Update	Revision Date
Q-291R1	Revise Part Numbers	13 Mar,2019
Q-291R2	Add TSB information – SSM 48499 Statement Added	02 Feb,2020

Models Affected: All 2019 And Later MY Ranger Box Delete Vehicles

Issue: Effective May 1, 2018 - This Bulletin is to assist upfitters to conform to **FMVSS 111** (Rear Visibility) rear view camera requirements for Ranger PickUp Box Delete (R1A) vehicles with the use of the Ford Rear View Camera Kit (Option Code 53N). FMVSS 111 is applicable to vehicle types with a GVWR of 4536 kg [10,000 lb] or less. Reference Ranger Incomplete Vehicle Manual for Conformity with Standard 111.

Rear View Camera kit:

Ford Rear View Camera Kit (Option Code 53N) Part Number: JC3J-19H391-A* (Service P/N: JC3Z-19G490-D) received with vehicle, reference Figures 1 and 2 below.

Note: If the vehicle is Pick-Up Box Delete (R1A) and is **not** equipped with rear view camera kit (Option Code 53N), a rear view camera can be added by installing the following camera kit from service (Service Part Number JC3Z-19G490-D). The dealer diagnostic tool (FDRS) is required to make the parameter change to activate camera. *Please make sure the dealer diagnostic tool has the current software updates.*

SPECIAL SERVICE MESSAGE:

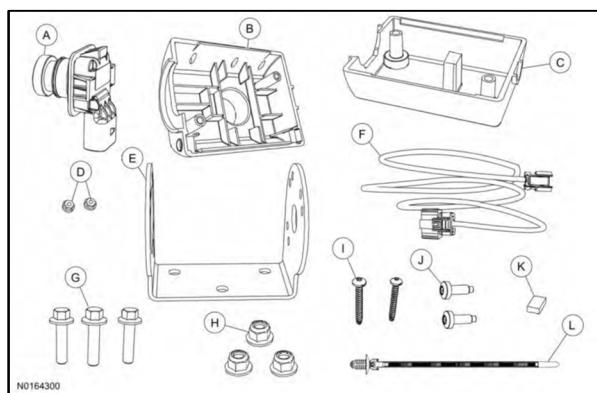
SSM 48499 - 2019-2020 Ranger - Pickup Box Delete - Enabling The Accessory Rear Parking Aid Camera

Some 2019-2020 Ranger pickup box delete vehicles may experience an inoperative accessory rear parking aid camera after upfitting per Body Builder Advisory Bulletin Q-291. The rear parking aid camera will need to be enabled in both the APIM and BCM using FDRS. For the APIM, follow: APIM - Accessory Protocol Interface Module Configuration > Customer Preferences > Rear View Camera (RVC) configuration. After enabling the APIM, turn the ignition to the OFF position and allow the cluster to power down until no longer illuminated. For the BCM, follow: BCM Programmable Parameters > Trailer > Rear Camera > Enable. If the rear parking aid camera remains inoperative after enabling, perform diagnostics per the Workshop Manual, Section 413-13B. Enabling of an upfitted rear parking aid camera is not a warrantable repair. Do not submit a claim for this condition.

APPLICABLE VEHICLES

2019 - 2020 TRUCK: FG P375N RANGER

Display: Pick-Up Box Delete (R1A) comes standard with a 4.2" LCD Display in Center Stack



Item	Quantity	Description
A	1	Rear View Camera
B	1	Front Camera Case Half
C	1	Rear Camera Case Half
D	2	Screw Retaining nuts
E	1	Mounting Bracket
F	1	Wire Harness
G	3	Bolts
H	3	Nuts
I	2	Screws (Longer)
J	2	Screws (Shorter)
K	1	Foam Pad
L	1	Push Pin Tie Strap

Figure 1: Camera Kit Contents

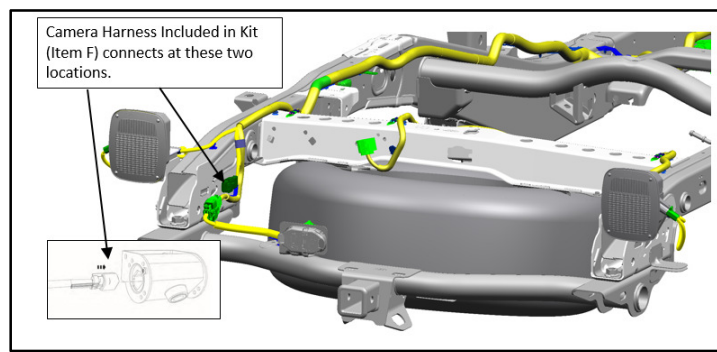


Figure 2: Camera harness Location for incomplete vehicles

Ford Camera Kit Compliance Capability:

The camera/display pairing is capable of meeting the backup camera portion of FMVSS 111 when mounted in the zones defined below in Figure 3, regardless of display size.

Compliance to FMVSS 111 will be the responsibility of the upfitter who alters the vehicle. This information is provided for directional purposes only, based on testing done by Ford.

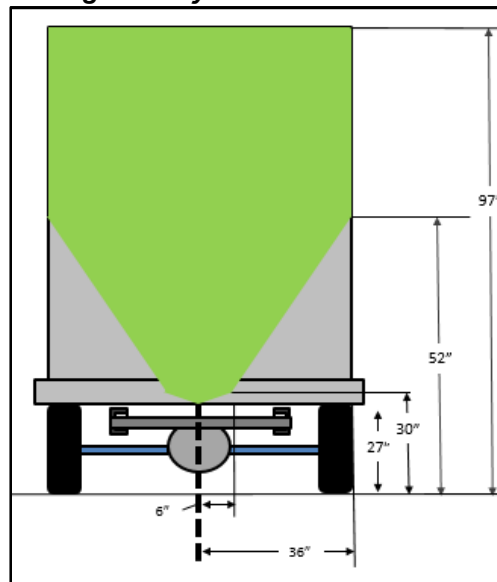


Figure 3: Coverage with 4.2 inch display.

Note that the NTEA has provided detailed information and educational resources to help members better understand the new FMVSS 111/reverse camera conformity (including a manual and test kit). Ref. <http://www.ntea.com/fmvss111rearvisibility>