



SVE BULLETIN

SPECIAL VEHICLE ENGINEERING – BODY BUILDERS ADVISORY SERVICE

E-Mail via Website: www.fleet.ford.com/truckbbas (click "Contact Us")

Toll-free: (877) 840-4338

QVM Bulletin: Q-282R2

Date: 15, December 2017

Revised: 19 July, 2018

2018 Super Duty Pickup Rear View Camera –Tailgate or Box Removal

Revision	Update	Revision Date
Q-282R2	• Corrected rear view camera kit part numbers	19 July, 2018

Models Affected: All 2018MY Super Duty Pickups

Issue: Effective model year 2018, all Super Duty pickups (produced by Ford as complete vehicles) comply with new FMVSS 111 field of view requirements. This bulletin is intended to assist upfitters, who alter the vehicle by removing the pickup box or tailgate, maintain compliance with FMVSS 111 field of view requirements using the Ford reverse camera kit.

Tailgate Removal only - Camera Kit and Jumper:

Parts required:

Service part number	Description
JC3Z-19G490-B	Incomplete Vehicle Rear View Camera Kit
HC3Z-14B242-K	Tailgate Removal Jumper Harness
4W1Z-14489-BA	Protective Cap (See Note)

Ford rear view camera kit **JC3Z-19G490-B** (see contents in Figure 3), can be installed following kit instruction sheet included in kit. The kit harness does not connect directly to rear camera frame harness – it will be necessary to install jumper **HC3Z-14B242-K** (see Figure 1 for location of jumper). Excess harness should be coiled and secured.

Note: Vehicles with power locking tailgate will have a second connector on the tailgate harness. To protect connector, install cap provided with vehicle (service part number 4W1Z-14489-BA)

The incomplete vehicle rear camera kit is not compatible with the 360 degree camera system.

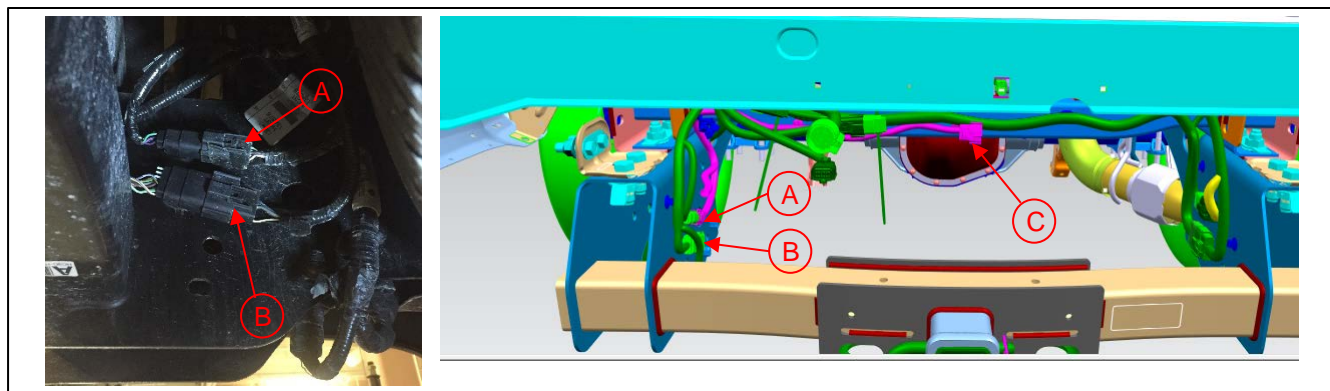


Figure 1: Tailgate camera harness location - jumper harness shown installed, with excess length stowed

Item	Description
A	Camera connector
B	Tailgate lock connector
C	Jumper Harness Connector (to camera kit)

Box Removal - Camera Kit and Jumper:

Parts required:

Service part number	Description
JC3Z-19G490-B	Incomplete Vehicle Rear View Camera Kit
HC3Z-13A409-J	Box Removal Removal Jumper Harness
4W1Z-14489-BA	Protective Cap (See Note)

Ford rear view camera kit **JC3Z-19G490-B** (see contents in Figure 3), can be installed following kit instruction sheet included in kit. With box removed, it will be necessary to install harness **HC3Z-13A409-J** as shown in Figure 2. The camera kit harness (item F, figure 3) will then connect to the HC3Z-13A409-J harness as indicated in Figure 2. The jumper harness is equipped with fasteners to facilitate installation.

Note: Vehicles with power locking tailgate will have a second connector on the tailgate harness. To protect connector, install cap provided with vehicle (service part 4W1Z-14489-BA)

The incomplete vehicle rear camera kit is not compatible with the 360 degree camera system.

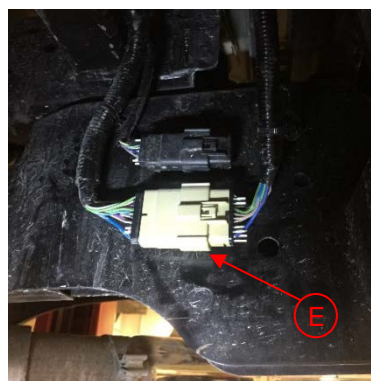
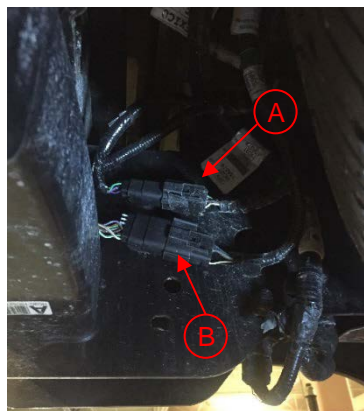
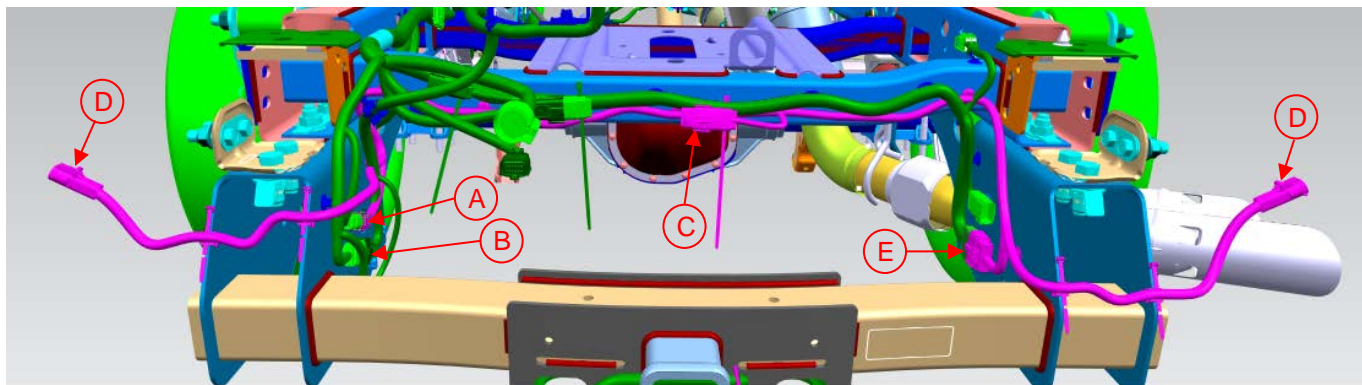


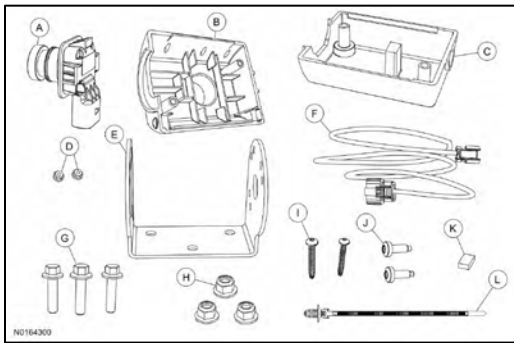
Figure 2: Box delete harness installation – jumper harness shown installed

Item	Description
A	Camera connector
B	Tailgate lock connector
C	Jumper Harness Connector (to camera kit)
D	Left / right tail lamp connector
E	Lighting connector

Rear View Camera Kit:

A rear view camera kit for incomplete vehicles is available through Ford Service (part number **JC3Z-19G490-B** – *see figures 1 and 2*). Note that this same kit is also available as an orderable option (order code 872) with all pickup box Delete and Chassis Cab incomplete vehicles.

An adapter jumper harness (as mentioned previously) is required to allow this kit to be used on completed vehicles (Pickups with tail gate and or box removed.) The jumper is not included with the kit.



Item	Quantity	Description
A	1	Rear View Camera
B	1	Front Camera Case Half
C	1	Rear Camera Case Half
D	2	Screw Retaining nuts
E	1	Mounting Bracket
F	1	Wire Harness
G	3	Bolts
H	3	Nuts
I	2	Screws (Longer)
J	2	Screws (Shorter)
K	1	Foam Pad
L	1	Push Pin Tie Strap

Figure 3: Camera Kit Contents

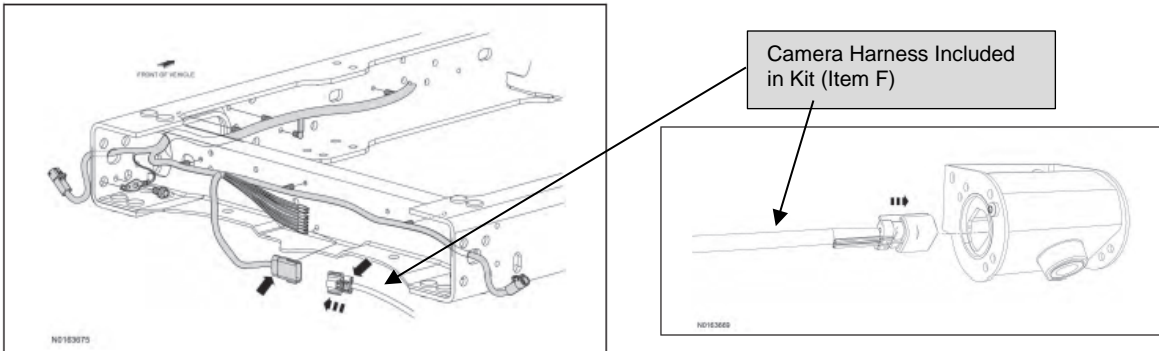


Figure 4: Camera harness Location for incomplete vehicles

Ford Camera Kit Compliance Capability:

Compete Super Duty pickups are available with either the 3.5 inch rear view mirror display, 4.2 inch center stack display or the 8 inch center stack display. Based on Ford testing, the camera/display pairing is capable of meeting the backup camera field of view requirement of FMVSS 111 when mounted in the zones defined below.

Note (Pickup box removal): The camera placement zones shown below are intended to assist the upfitter in meeting the requirements in FMVSS 111. Additional FMVSS requirements must be taken into consideration when removing a pickup box from a vehicle. The alterer should refer to the PICKUP BOX REMOVAL / ALTERATIONS DESIGN RECOMMENDATIONS section of the Body Builder Layout Book for further guidance.

Compliance to FMVSS 111 will be the responsibility of the upfitter who alters the vehicle. This information is provided for directional purposes only, based on testing done by Ford.

If equipped with a 3.5 inch rear view mirror display the camera included in kit is capable of complying with FMVSS 111 when mounted in the areas defined in Figure 5.

If equipped with a 4.2 inch or 8 inch display the camera included in kit is capable of complying with FMVSS 111 when mounted in the areas defined in Figure 6.

Figure 5: Coverage with 3.5 inch display, as shown at the rear plane of the vehicle

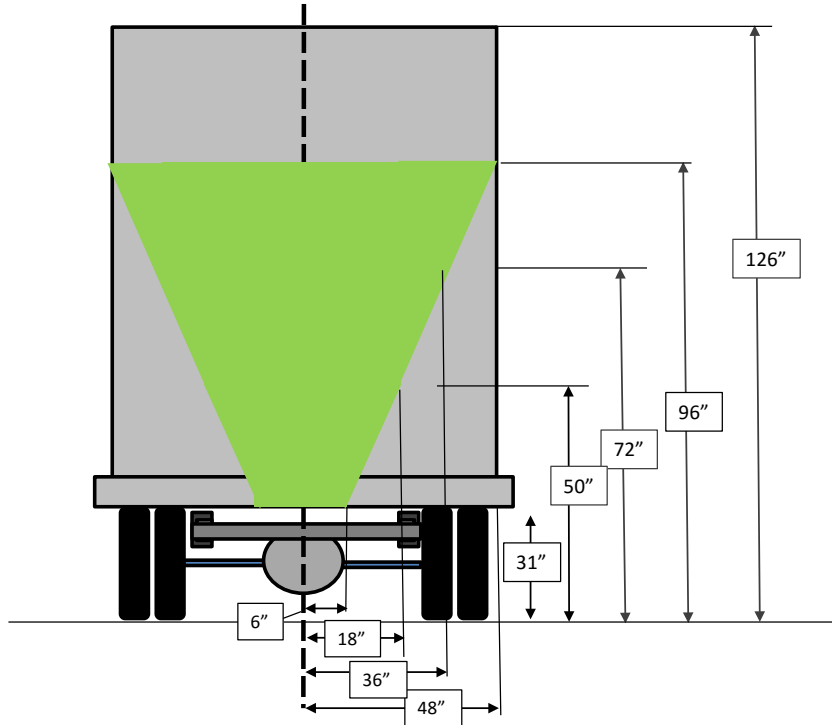
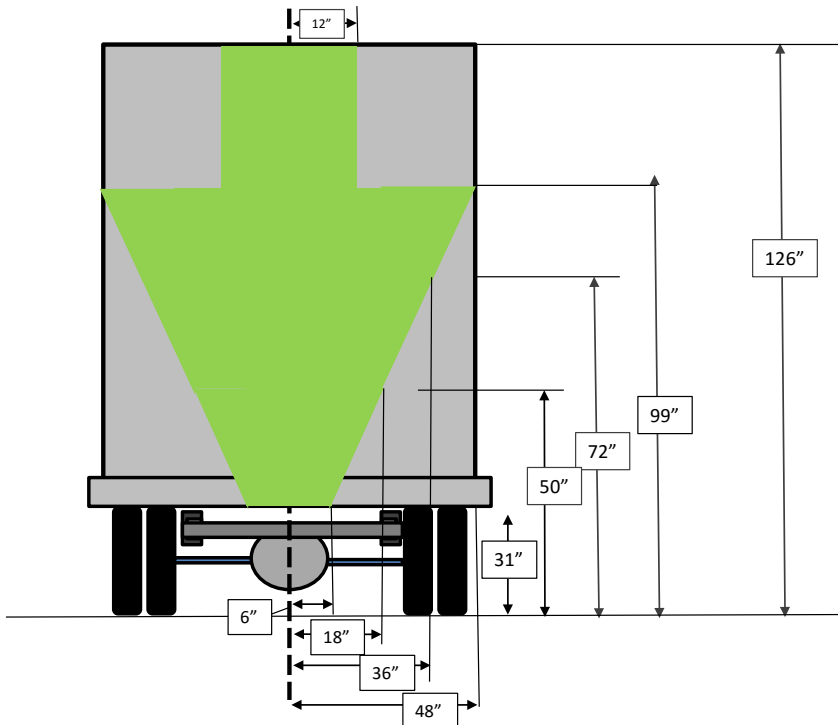


Figure 6: Coverage with 4.2 and 8 inch display, as shown at the rear plane of the vehicle



Note that the NTEA has provided detailed information and educational resources to help members better understand the new FMVSS 111/reverse camera conformity (including a manual and test kit). Ref.

<http://www.ntea.com/fmvss111rearvisibility>